

PERFECT LASER

Metal Pipe / Tube / Sheet Fiber Laser Cutting Machine

Model:PE-F3015B





Customer-orientated

Wish to provide benefit to agents and customers

Free pre-sales consulting, free sample service

Life-long service

Engineer overseas installation available

2 hours quick feedback & 24 hours after-sales service

10000+ customers choice

Perfect Laser will be your best partner



1. This fiber laser cutting machine can cut round pipe, tube, square pipe and flat metal sheet together. Once invest, whole life benefit.
2. Laser cutting head nozzle can contact metal plate surface, cutting head automatically move up and down, high sensitivity, good stability. No obvious spark phenomenon.
3. The metal laser cutter with 3HP high-power water chillers: adopts water cooling method to keep the laser head always work in constant temperature (plus or minus 5 degrees), to ensure the the stability and fast operation of the laser.
4. The metal laser cutter adopt 500w - 1000w (IPG, Raycus, or Max brand) fiber laser source, the photoelectric conversion rate is 3 times higher than YAG laser cutter, high beam quality, more than 100,000 hours' lifetime, no extra maintenance costs.
5. Universal ball screw feeding system and saw-tooth-shaped working platform, makes metal sheet loading fast and keeping stable feeding work. Fixing strip of the saw-tooth working platform can fix material to reduce the spark splash when cutting.
6. This fiber laser cutter adopts Japan's Panasonic 750w high power servo motor and driving system. It can improve the cutting speed and stability. Positioning accuracy: $\leq \pm 0.05\text{mm}$, maximum moving speed 90m / min, maximum effective cutting area 1500 x 3000mm. The servo motor system has excellent dynamic response acceleration characteristics for smooth operation, reliable, and free of maintenance.
7. Rotary Cutting System: the unique design with rotary fixture can solve the technical problems for cutting round and square pipe and tube.

Effectively cut round pipe, tube, square tube, rectangular tube, oval tube, parallel oval tube, D-tube and many other styles. Also it can cut flat metal sheet in the same time. It's very powerful.

Applicable Materials:

Stainless steel, carbon steel, mild steel, manganese steel, galvanized sheet, alloy sheet, rare metals, etc.

Applicable industry:

Sheet metal industry, kitchenware industry, elevator mobile phone industry, advertising industry, chassis cabinet industry, machinery parts processing industry, precision machining industry, automobile manufacturing industry, daily light industry, agricultural machinery and food machinery industry, hardware bathroom industry, medical fitness equipment industry, etc.



Control System



Cutting Head



DSP Remote Controller



Rotary Cutting System

Fiber Laser Cutting Thickness (Just For Reference)

Power	Material	Thickness(mm)	Speed(m/min)	Gas type			
300W	Stainless steel	0.5	>12	Nitrogen			
		1	5.4~7.2				
		2	0.96~1.2				
	Carbon steel	1	7.2~9	Oxygen			
		2	2.1~2.7				
		3	0.9~1.1				
500W	Stainless steel	0.5	>18	Nitrogen			
		1	8.4~12				
		2	1.8~2.4				
		3	0.84~1.2				
	Carbon steel	1	8.4~12	Oxygen			
		2	3~4.2				
		3	1.5~2.1				
		4	1.2~1.5				
		5	0.9~1.2				
		6	0.72~0.96				
		800W	Stainless steel		0.5	>21	Nitrogen
					1	12~18	
2	3.6~4.2						
3	1.2~1.8						
Carbon steel	4		0.78~1.2	Oxygen			
	1		12~18				
	2	4.2~5.4					
	3	3~3.9					
	4	1.8~2.4					
	5	1.2~1.8					
	6	0.9~1.2					
	8	0.72~1.84					
1000W	Stainless steel	10	0.6	Nitrogen			
		1	17~21				
		2	5.4~7.2				
		3	2.1~3				
		4	0.8~1.5				
	Carbon steel	5	0.6~0.9	Oxygen			
		1	15~18				
		2	5.1~6				
		3	3.5~4.2				
		4	2.3~2.7				
		5	1.7~2.1				
		6	1.2~1.8				
		8	0.9~1.1				
		10	0.6~0.72				



1 Fiber Laser Source

Adopt world famous (USA-IPG, Raycus, Max brand) 500 watt - 1000 watt fiber laser source, with excellent laser beam quality, high reliability, and 100.000 hours working life, no extra maintenance costs.

2 Laser Cutting Head

With dynamic focus system, Can find out the materials and cut automatically. With higher sensitivity, and better stability.





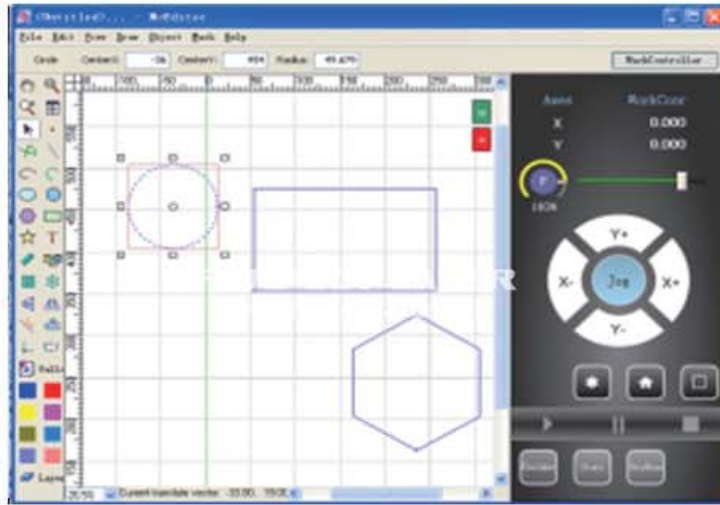
3 Japan imported 750w “Panasonic” servo motor and driving system

Positioning accuracy: $\leq \pm 0.05\text{mm}$, maximum moving speed 90m / min, No noise. Greatly improve the cutting speed and stability.

4 Rotary Cutting System

Standard cutting diameter is 150mm by 6 Meters length. It also can be customized according to your special requirement. The unique design of the rotary system can avoid technical problems that are not concentric when the pipe is bent and cut. It can continually cut each angle without any stop, very fast.





5 LCD Controller
 Advanced control panel and system with English version, Easy to learn and operate.

6 DSP Remote Controller
 Wireless & portable
 Easy control the movement of the laser cutting head from all directions.





7 Auto Feeding Ball Design

Easy for feeding the flat metal sheet from all directions.

8 Auto lubricating Device

The gear rack can be automatically lubricated, ensure the rack's precision and long-term using.



9 Water chiller

Adopt world famous "HANLI" 3HP high power water chiller, can keep the laser head in a comfortable working temperature all the time.



Product Name	Fiber Laser Cutter For Metal Pipe & Flat sheet
Model	PE-F3015B 500w
Laser Power	300w / 500w / 800w / 1000w / 2000w
Table Cutting Size	1500 x 3000mm
Maximum running speed	90m / min
Laser Wavelength	1080 nm
Minimum cutting line width	0.1mm
Rated output power	50-2000W
X, Y-axis positioning accuracy	≤±0.01mm
Repeated positioning accuracy of the table	≤±0.01mm
The maximum load of the workbench	800 Kgs
Z-axis travel	120mm
Volume	4.6*2.3*1.8m
Machine Power	12KW
Water Chiller Power	2kw
Electricity voltage	380v 50Hz±10%
Red light position	yes
Auxiliary gas	Oxygen, nitrogen
Pipe type	Round, oval, special-shaped pipe
Pipe Diameter & Length	Standard diameter is 150mm, 6 Meter length (Perfect Laser also can customized it according to your special requirement)
Whole Machine Weight	4.5 Tons

Terms and Conditions



Q1: Are you a factory or a trade company?

A1: We are a factory.

Q2: Where is your factory located? How can I visit there?

A2: Our factory is located in Wuhan, Hubei province, China. All our clients are warmly welcome to visit us!

Q3: Do you have any certificates?

A3: All series of machines have passed CE, FDA, ISO verification.

Q4: What is the trade term?

A4: FOB/CIF/CFR/EXW are favorable.

Q5: What is the payment term?

A5: T/T in advance.

Q6: Do you arrange shipment for the machines?

A6: Yes, We can arrange shipment based on FOB/CIF terms. For EXW price, shipment should be made by your shipping agents.

Q7: Warranty?

A7: 12 months (except for artificial damage).

Q8: How is the packing?

A8: All the packing comply with exporting standard.

Q9: How long is the lead time?

A9: 7-10 working days.

For other questions,we will reply you ASAP after receiving your consult!